

Greening Stanton

E.M. Stanton School Advisory Council and South of South Neighborhood Association

We led a multi-disciplinary group of designers and consultants through a Community Design Collaborative (CDC) service grant to develop a schoolyard greening plan for E.M. Stanton K-8 School in South Philadelphia. The CDC all-volunteer team collaborated with stakeholders and community to develop project goals based on the school community's needs, interests, and capacity. Our proposal transforms the schoolyard from a 9,400 square foot lot of deteriorated asphalt, into an intensely programmed open space for learning, performance, and play—using green stormwater infrastructure and “nature play” as its framework.

The design introduces natural design elements, interactive garden landscape spaces, and science garden plots, a vine-clad entry pergola, and a covered stage for performance and outdoor teaching. Rain gardens define the contours of the nature play area, allowing students to witness the action of their natural environment.



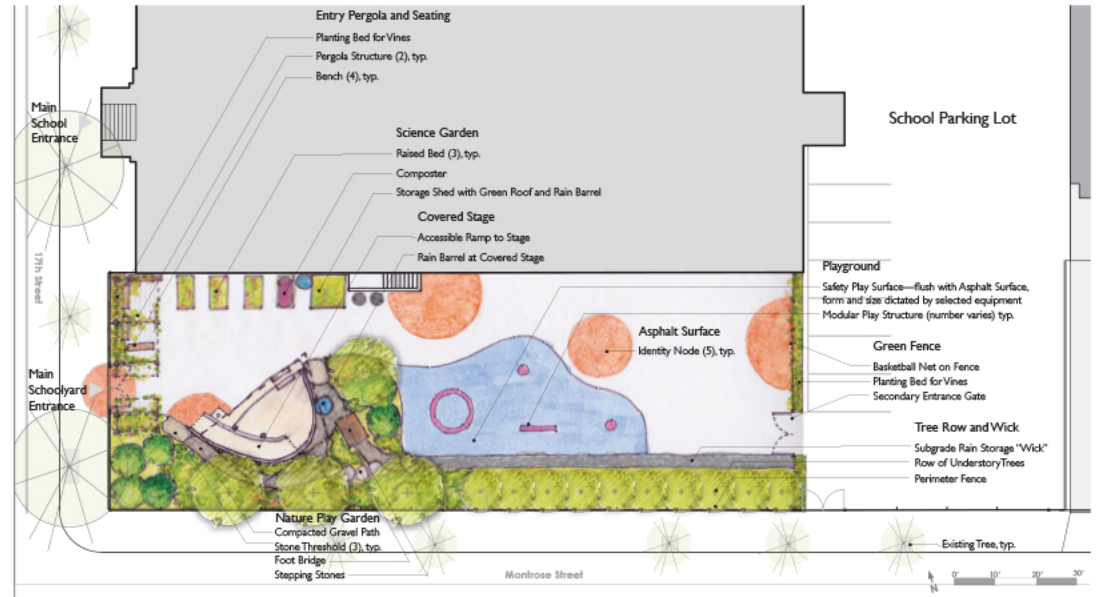
Task Force Meeting



Schoolyard Context



Existing Paved Schoolyard



Proposed Schoolyard Plan



Rendered View into Schoolyard

**work produced while principal at Locus Partners*