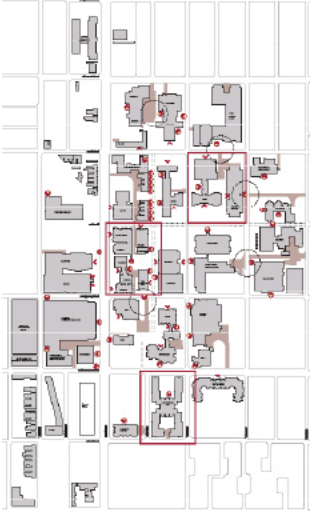


Temple University 20/20 Master Plan

Temple University

Temple 20/20 envisions a ten year, multi-phased master plan for transforming Temple into a community-engaged, pedestrian-oriented academic and cultural destination in Philadelphia. The master plan balances University goals of academic and residential growth with the urban and contextual issues of the campus and the surrounding neighborhoods.

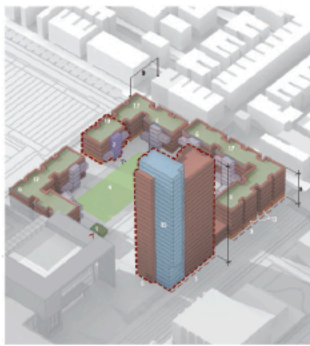
The center of campus is transformed to create a full-block open landscaped quad. New buildings were proposed at key development sites to strengthen existing academic and residential clusters. New mixed-use, residential towers identify gateways to campus and a new signature campus library populates Broad Street with student activity. The proposed building and landscape improvements increase academic space by 18% and open space by 125% respectively. Residential facilities are increased by 50%.



An assessment of existing buildings and campus layout informed the master plan



Broad Street is reclaimed, a new central quad is created, the southern gateway is strengthened with a new residential village, and science and research facilities expand significantly



Urban design diagrams visually describe the key design, sustainability, and urban requirements of each development site

